

Some insects of Richmond Park  
and Ham Common - Part 4



Nigel L Sawyer



**Conopid fly** - *Sicus ferrugineus*

## **Some Insects of Richmond Park and Ham Common**

Part 4 of a series of booklets that illustrate some of the common (and a few rarer) insects found in Richmond Park and the adjacent Ham Common, especially the Woods.

The photographs are grouped by taxonomic group although not necessarily in the correct order.

This booklet covers some of the Diptera (Flies) that I have found and photographed in this part of Surrey. It is not unfortunately comprehensive!

Help with some of the identifications has come from the iNaturalist website.

Some rare flies have been seen over the past two years, the best being Tree Snipe-Fly and *Villa* sp. a Beefly.

I have learnt a lot about identifying (or not!) some groups of flies. Those groups which interest me the most may become evident when looking at the photographic coverage...

Nigel



Top left - Black Fly, Top left - *Bibio lanigerus*, Bottom left - *Oxya* (fruit fly) and Bottom right - *Thereva nobilitata*



Top - Snipe-fly, Bottom left - Black Snipe-fly and Bottom right - the rare Tree Snipe-fly



**Bee-flies:** Top - the common Bee-fly and Bottom - *Villa* sp. (Possibly Downland Bee-fly recorded from Bushy Park but not Richmond Park where this one was photographed in 2020)



**Conopid Flies:** Top left - *Conops ?flavipes*, Top right - *Physocephala rufipes* and Bottom - *Myopa testacea*



**Dance flies:** Top - *Empis tessellata* and Bottom - *Empis* sp. (probably also *E.tessellata*)



Top - Unidentified Soldier-Flies and Bottom - a Signal Fly (*Poecilobrothus nobilis*)





**Soldier-Fly** - Broad Centurion



**Tachinid Flies:** Top left - *Gymnocheta viridis*, Bottom left - *Tachina fera* and Right - *Tachina lurida*  
*T.fera* is one of the commonest flies in Richmond Park especially in summer and in Isabella Plantation



**Tachinid Flies:** Top left - *Phania funesta* and Top right - *Phasia hemiptera*  
Bottom - two un-identified flies



The large and splendid Tachinid fly - *Phasia hemiptera*  
The larva of this fly parasitise various Shieldbugs



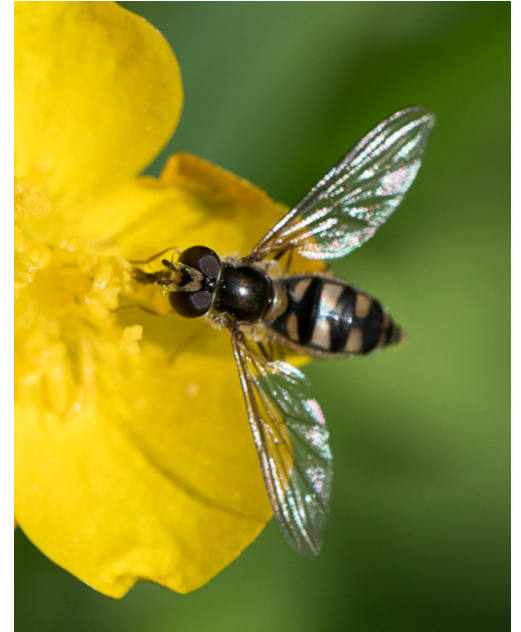
Yellow Dung Fly



**Dung Flies:** Top - *Scathophaga* sp. and Bottom - *Cordilura albipes*



**Hoverflies:** Top left - *Platycheirus albimanus* and Top right - *Bacca elongata*  
Bottom - *Neoascia meticulosa*



**Hoverflies:** Left and Bottom right - *Epistrophe eligans* and Top right - *Meliscaeva* sp.





**Hoverflies:** Top left - *Meliscaeva auricollis*, Top right - *Sphaerophoria* sp. and Bottom - *Pipizia* sp.



**Hoverflies:** Top - *Eristalis pertinax* flying but still in its larval cocoon. Only time I have ever seen this  
Bottom - the bumble bee mimic *Eristalis intricaria*



**Hoverflies:** Top - Faces of *Eristalis pertinax* (left) and *E. tenax* (right)  
Bottom - *Syrirta pipiens*, a small, common species



**Hoverfly:** The common "Batman Hoverfly" - *Myathropa florea*



**Hoverfly:** The Bronze Sap Hoverfly - *Ferdinanda cuprea*  
Looks more metallic in real life and saw one only each year 2020 and 2021



**Hoverflies:** Top - *Cheilosa scutellum* (probably), Bottom left - *Helophilus trivittatus* and Bottom right - *Chrysotoxum bicinctum*



**Hoverflies:** Top left - *Parasyrphus* sp., Top right - the migrant *Scaeva pyrastii*, Bottom left - *Rhinga campestris* (probably)  
Bottom right - flying Marmalade Hoverfly, one of the commonest species seen



**Hoverflies:** Top left - *Parhelophilus* sp. (associated with vegetated water/ ponds, Top right - *Meredon equestris*  
Bottom left - a wasp mimic (*Xanthogramma pedissequum*) and Bottom right - *Syrphus* sp.





**Hoverfly:** *Syrphus* sp.



**Hoverflies:** Top - *Volucella inanis* and Bottom - Hornet Hoverfly (*V. zonaria*)  
Large, late summer Hoverflies



**Hoverfly:** *Volucella inanis*



**Hoverflies:** Top left - *Xylota sylvarum*, Top right - *X.florum* and Bottom - *X.segnis*



**Robberflies:** Top left - *Leptogaster* sp., Top right - *Choerades marginatus*, Bottom left - *Dioctria linearis*  
Bottom - *Dioctria baumhaueri*



**Robberfly:** *Machimus (Tolmerus)* sp. with prey



**Robberflies:** Top - *Neoitamus cyanurus* and Bottom - *Machimus (Tolmerus)* sp. with prey  
The commonest Robberfly in the Park is *Machimus (Tolmerus) atricapillus*



**Horse Flies:** Top - *Tabanus bromius* (note the eye stripe) and *Hybomitra* sp. (only one seen in two years)





**Flies:** Top - an orange Muscidae fly, Bottom left - a Satellite Fly (*Metopia* sp.) and Bottom right - *Anthomyia pluvialis*



**Crane Flies:** Left - *Tipula maxima* and Right - mating Spotted Crane-Fly



**Flies:** Top - Greenbottle, Bottom left - *Helina* sp. and Bottom right - Muscidae fly



**Flies:** Top left - *Graphomya maculata*, Top right - Cluster Fly (*Pollenia* sp.)  
Bottom left - Unknown Fly and Bottom right - a Flesh Fly



Leaf mine caused by the larva of *Liriomyza eupatorii*, Family - Agromyzidae