

Some insects of Richmond Park
and Ham Common - Part 2



Nigel L Sawyer



Cinnabar Moth

Some Insects of Richmond Park and Ham Common

Part 2 of a series of booklets that illustrate some of the common (and a few rarer) insects found in Richmond Park and the adjacent Ham Common, especially the Woods. This volume covers the Lepidoptera, Odontata (Moths, Butterflies, Dragonflies and Damselflies) and Orthoptera. Not all species seen are included.

The photographs are grouped by taxonomic group although not necessarily in the correct order.

Caterpillars were in huge numbers on fences in May 2020 in Isabella Plantation but not were identified.

The Silver Washed Fritillary and Common Blue shots were taken at Box Hill - the species was seen in the Park but these shots are much better than those!

Nigel

Front cover shot - Large Skipper on a Bracken frond



Typical May scene with plenty of caterpillars (Top), November Moth (Bottom left) and a Pinion Moth (Bottom right)



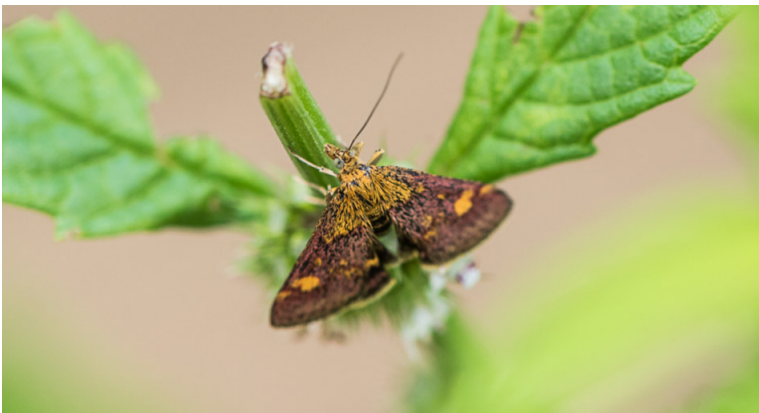
Top left - Mottled Umber, Top right - Feathered Thorn, Bottom left - Pale Brindled Beauty, Bottom right - Small Quaker



Top left - Oak Leaf Roller, Top right - Satellite Moth, Bottom - a female Bagworm (a moth)



: Top left - Sulphur Tubic with Long-horned moths: Top right - *Nematopogon* sp and Bottom - *Adela reaumurella*



Top - Rosy Footman, Bottom left - Mint Moth and Bottom right - Orange Footman



Jersey Tiger Moth



Top left - Brown-lined Moth, Top right - Antler Moth and Bottom - Mother Shipton



Top - a rare W-letter Hairstreak, Bottom left - Large Skipper and Bottom right - Small Skipper



Top - Purple Hairstreak caterpillar & adult and Bottom left- Mating Common Blues and Bottom right - Small Copper



Male Orange Tip feeding on Bluebells



Right - Brimstone, Top right - Green Veined White and Bottom right - Ringlet



Top - Gatekeeper and Bottom - Meadow Brown



Top - Speckled Wood and Bottom - Marbled White



Comma



Top left and Bottom - Red Admiral and Top right - Painted Lady



Left - Painted Lady and Right - Peacock



Mating Damselflies - Top - Large Red Damselfly and Bottom - Azure Damselfly



Top - Female Blue-tailed Damselfly and Bottom - Azure Damselfly



Willow Emerald - perhaps in commonest Damselfly around Thomson Pond in 2020



Top left and Bottom - Male Common Darter and Top right - Male Ruddy Darter (totally black legs and pinched abdomen)



Male Southern Hawker



Top - Speckled Bush Cricket and Bottom Roesel's Bush Cricket